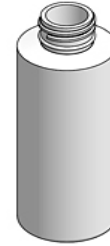
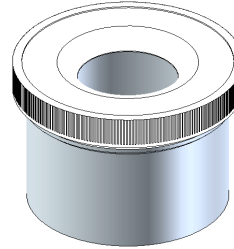
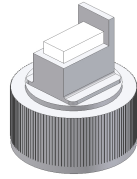
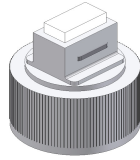




**Use The Guide Below To Determine Applicator Tips, Bottles  
And Docking Stations Suggested To Apply 3M Product Numbers:  
Primer 94, AP115, 2262AT, 4296T, 4298, 4298UV, K-520, N-200J, And Others**



Path Required Inches	Path Required Millimeters	Rectangular Tip Without Guide	Rectangular Tip With Guide	Docking Station	HDPE Bottle
0.500	12.7	23FL	23JJ	22A	4oz - 21A
0.625	15.9	47DD	47BB	22A	8oz - 21B
0.750	19.1	44BF	44DU	22A	
0.875	22.2	32FQ	32DF	22A	
1.000	25.4	32EN	32CH	22A	
1.125	28.6	27FN	27EW	22A	
1.250	31.8	27EN	27CS	22C	
1.500	38.1	38BS	38AB	22E	
1.750	44.5	49AW	49AU	22E	
2.000	50.8	58AD	58AB	22E	
2.250	57.2	53W	53Y	22E	
1.000	25.4	32AY Extended Head		22E	

**14A - Cap To Seal Designetics Bottles**

**14E - Cap To Seal 3M Bottles**

**14G - Adapter For Tips To Fit 3M Bottles**

**14F Funnel to Transfer 3M Adhesion Promoter to Designetics, Inc. Bottle**

***\*Designetics Can Design Any Size And Shape Applicator Tip To Fit Your Needs.***

***\*\*Designetics Has The Capability Of Producing Fully Automated Systems***

**NOTES:**

Please call Brad Spraw @ Designetics, Inc. @ 419-306-7998

or Send E-Mail To: bspraw@designetics.com

See More Information And Complete Catalog At: [www.designetics.com](http://www.designetics.com)

4/2016